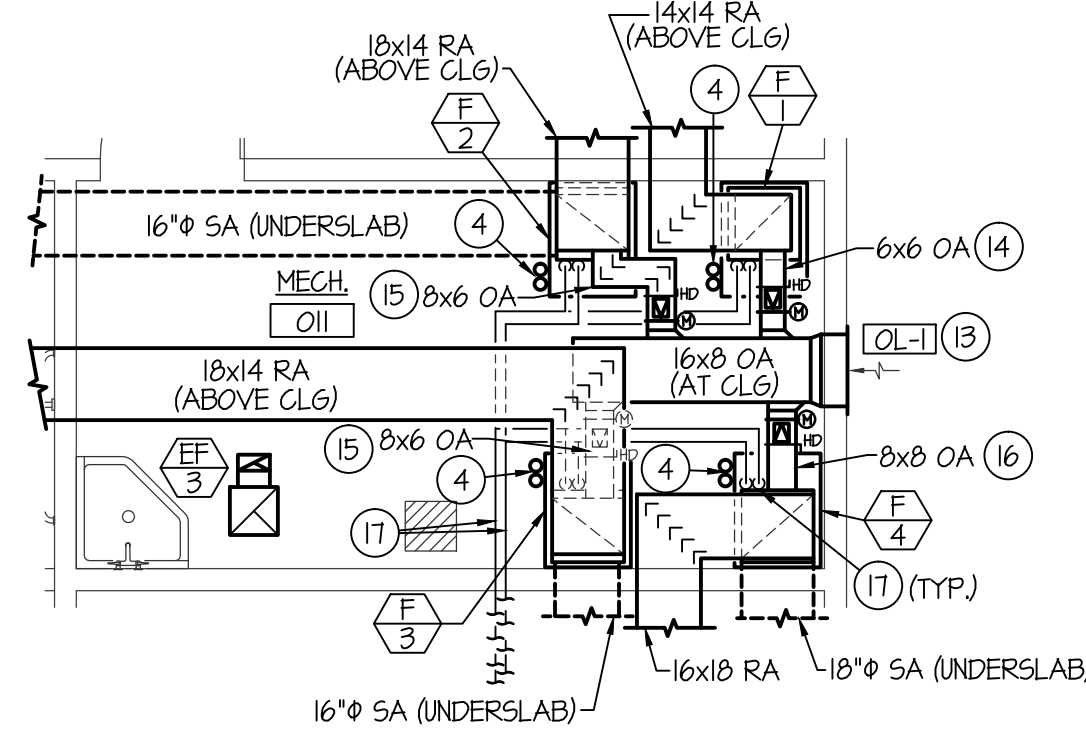
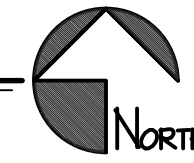


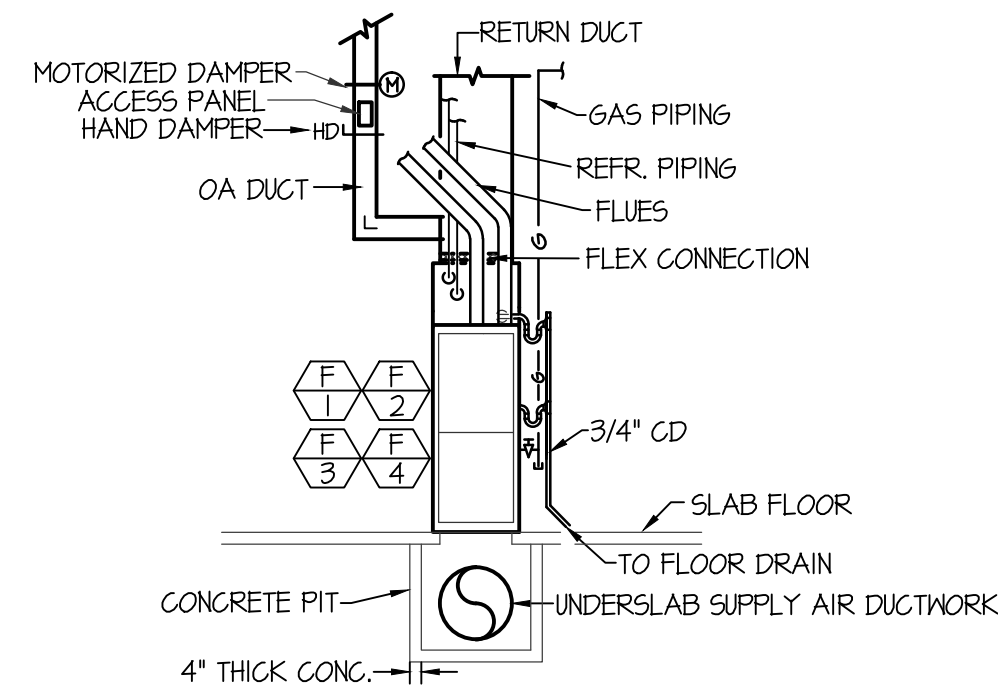
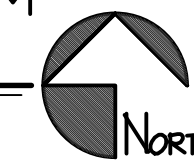
POOL HOUSE MECH. FLOOR PLAN

SCALE: 1/8" = 1'-0"



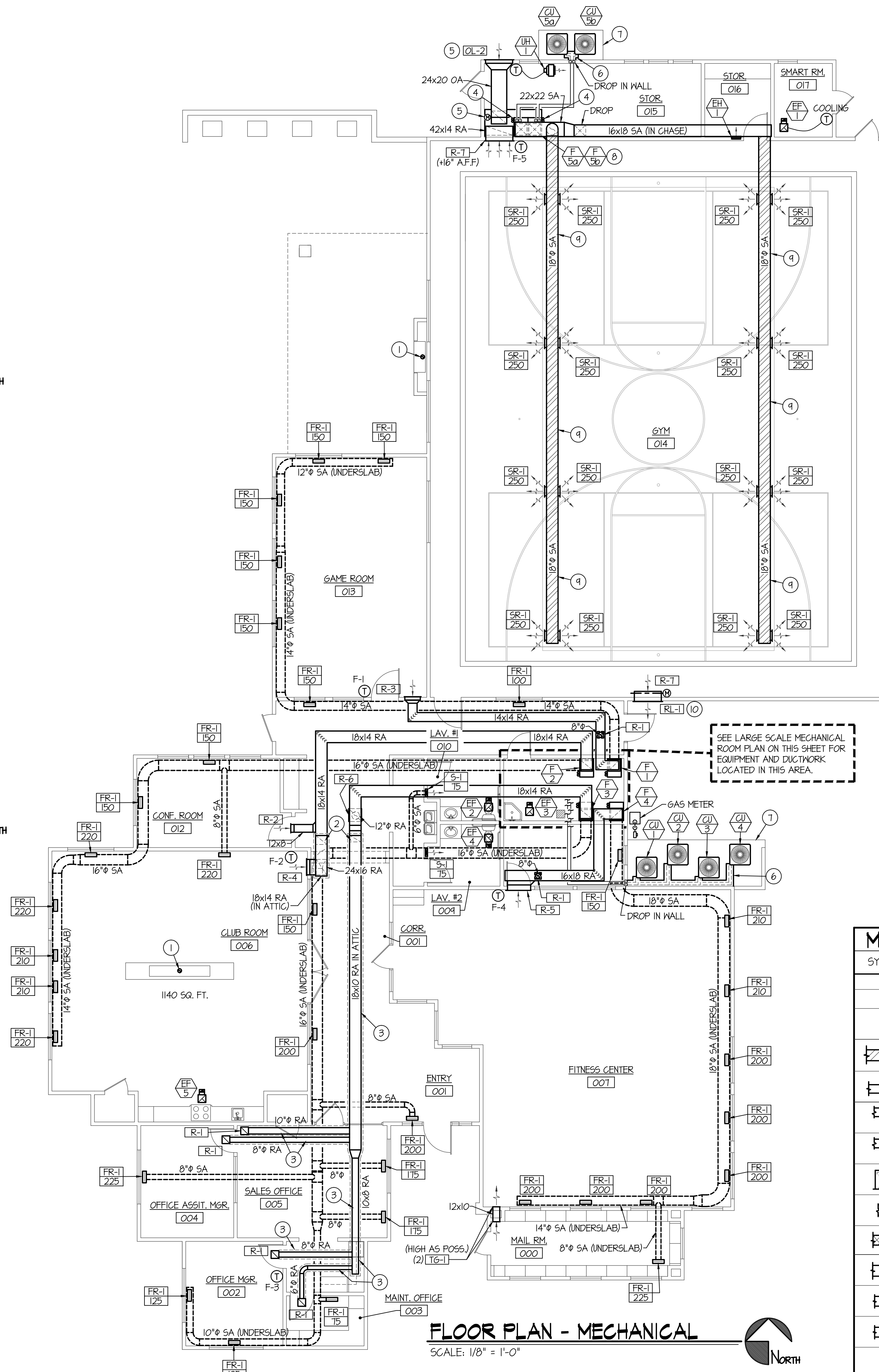
LARGE SCALE MECHANICAL ROOM MECH. FLOOR PLAN

SCALE: 1/4" = 1'-0"



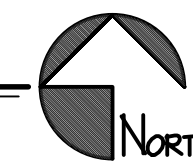
TYPICAL DOWNFLOW FURNACE ELEVATION

NO SCALE



FLOOR PLAN - MECHANICAL

SCALE: 1/8" = 1'-0"



MECHANICAL LEGEND

SYMBOL	DESCRIPTION
Ⓣ	ELECTRONIC THERMOSTAT
Ⓢ	ELECTRONIC SENSOR
Ⓜ	EQUIPMENT SYMBOL
▨	UNDERSLAB DUCTWORK
HD	HAND DAMPER
⊕	ROUND BRANCH DUCT WITH HAND DAMPER
⊕	RECTANGULAR SUPPLY AND RETURN AIR DUCT TAKE-OFF
⊕	TURNING VANES
⊕	DUCT TRANSITION
▨	INSULATED FLEXIBLE DUCT
⊕	SIDEWALL REGISTER SUPPLY OR RETURN AIR
⊕	RETURN AIR OR EXHAUST GRILLE
⊕	CEILING DIFFUSER
⊕	CEILING MOUNTED EXHAUST FAN

PLAN NOTES:

- INSTALL FIRE PLACE FLUE(S) THRU ROOF AS PER MANUFACTURER'S INSTRUCTIONS. SEAL ROOF PENETRATION WEATHERTIGHT.
- RISE RETURN AIR DUCT UP FROM CEILING SPACE INTO COLD ATTIC SPACE.
- ALL RETURN DUCTWORK LOCATED IN COLD ATTIC TO BE INSULATED WITH 1-1/2" THICK EXTERNAL DUCTWRAP.
- RISE (2) 3" FURNACE FLUES UP THRU ROOF TO VERTICAL VENT TERMINATION. SEAL ROOF PENETRATION WEATHERTIGHT. SEE DETAIL ON SHEET M-2.
- INSTALL LOUVER ON WALL AS HIGH AS POSSIBLE. CONNECT 24x20 OA DUCT TO LOUVER AND RUN AS HIGH AS POSSIBLE AT CEILING OF MECH. ROOM. DROP DUCT DOWN AND CONNECT TO FURNACE FLENUM. INSTALL MOTORIZED DAMPER & ACCESS PANEL IN VERTICAL PORTION OF 24x20 OA DUCT. MOTORIZED DAMPER TO PROVIDE FULL ECONOMIZER TO THINNED FURNACES AND BALANCE DAMPER TO PROVIDE A MINIMUM OF 500 CFM. INTERLOCK MOTORIZED DAMPER WITH THINNED FURNACE OPERATION. SEE SPECIFICATIONS FOR CONTROLS.
- COVER EXPOSED REFRIGERANT PIPING WITH SHEET METAL COVER. SEE DETAIL ON SHEET M-3 FOR MATERIALS AND CONSTRUCTION.
- INSTALL CONDENSING UNITS ON 4" THICK CONCRETE PAD (BY GENERAL CONTRACTOR). SEE ARCH. PLANS.
- INSTALL FURNACE ON 12" HIGH RETURN AIR FLENUM. SEE DETAIL ON SHEET M-2.
- INSTALL EXPOSED SPIRAL DUCTWORK IN GYM AS HIGH AS POSSIBLE. CAREFULLY COORDINATE FINAL LOCATION WITH LIGHTS AND OTHER EQUIPMENT.
- INSTALL RELIEF LOUVER ON WALL AS HIGH AS POSSIBLE. INTERLOCK MOTORIZED DAMPER WITH FURNACE ECONOMIZER OPERATION.
- HANG EXHAUST FAN FROM ROOF STRUCTURE IN POOL EQUIPMENT ROOM AS HIGH AS POSSIBLE.
- INSTALL ALL EXHAUST DUCTWORK EXPOSED AT CEILING AS HIGH AS POSSIBLE IN MECH. ROOM.
- INSTALL LOUVER ON MECH. ROOM WALL AS HIGH AS POSSIBLE AND CONNECT 16x8 OA DUCT TO LOUVER. RUN 16x8 OA DUCT AS HIGH AS POSSIBLE AT CEILING OF MECH. ROOM.
- DROP 6x6 OA DUCT DOWN FROM CEILING AND CONNECT TO RETURN AIR DUCT NEAR FURNACE. INSTALL MOTORIZED DAMPER, ACCESS PANEL AND HAND DAMPER IN VERTICAL PORTION OF 6x6 OA DUCT. BALANCE HAND DAMPER TO 100 CFM AND INTERLOCK MOTORIZED DAMPER WITH FURNACE OPERATION.
- DROP 6x6 OA DUCT DOWN FROM CEILING AND CONNECT TO RETURN AIR DUCT NEAR FURNACE. INSTALL MOTORIZED DAMPER, ACCESS PANEL AND HAND DAMPER IN VERTICAL PORTION OF 6x6 OA DUCT. BALANCE HAND DAMPER TO 170 CFM AND INTERLOCK MOTORIZED DAMPER WITH FURNACE OPERATION.
- DROP 8x8 OA DUCT DOWN FROM CEILING AND CONNECT TO RETURN AIR DUCT NEAR FURNACE. INSTALL MOTORIZED DAMPER, ACCESS PANEL AND HAND DAMPER IN VERTICAL PORTION OF 8x8 OA DUCT. BALANCE HAND DAMPER TO 220 CFM AND INTERLOCK MOTORIZED DAMPER WITH FURNACE OPERATION.
- RUN REFRIGERANT PIPING ABOVE CEILING AND DROP DOWN THRU CEILING TO FURNACE DX COOLING COIL AND CONNECT.
- MECH. CONTRACTOR TO PROVIDE AND INSTALL BOILER FLUES AS PER MANUFACTURER'S INSTRUCTIONS THRU ROOF TO VERTICAL VENT TERMINATION ASSEMBLY. SEE MANUFACTURER'S DATA FOR SIZE OF FLUES AND MATERIAL TO BE USED. SEE POOL EQUIPMENT CONTRACTOR DWGS.
- BOILERS TO BE PROVIDED BY POOL EQUIPMENT CONTRACTOR. SEE POOL EQUIPMENT CONTRACTOR DWGS.



**Engineered Systems Associates
Mechanical Engineers**

Dwayne Sudweeks
1355 East Center - Pocatello, Idaho 83201
Phone: (208) 233-0501 Fax: (208) 233-0529 email: esa@engsystems.com

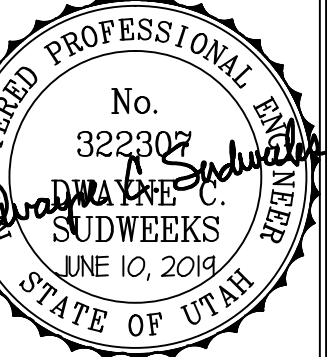
STRATA CLUBHOUSE

LOGAN, UTAH

MECHANICAL FLOOR PLAN

PROJECT:

SHEET TITLE:



DRWN. BY: SR
CKD. BY: DCS
JOB NO. 18043
DATE: JUNE 2014

SHEET: **M-1**
OF: THREE